

**AVISON
YOUNG**



Office Space for Lease
19201 East Mainstreet
Parker, CO 80134



Ample parking and abundant amenities nearby

Lease Rate

\$20.00-\$26.00/sf fsg

Space Available

Suite 104 1,131 sf

Suite 203 1,341 sf

Suite GL1 2,628 sf

Property Highlights

- Bank & ATM in lobby
- High ceilings
- Monument signage available
- Strong ownership
- Conveniently located

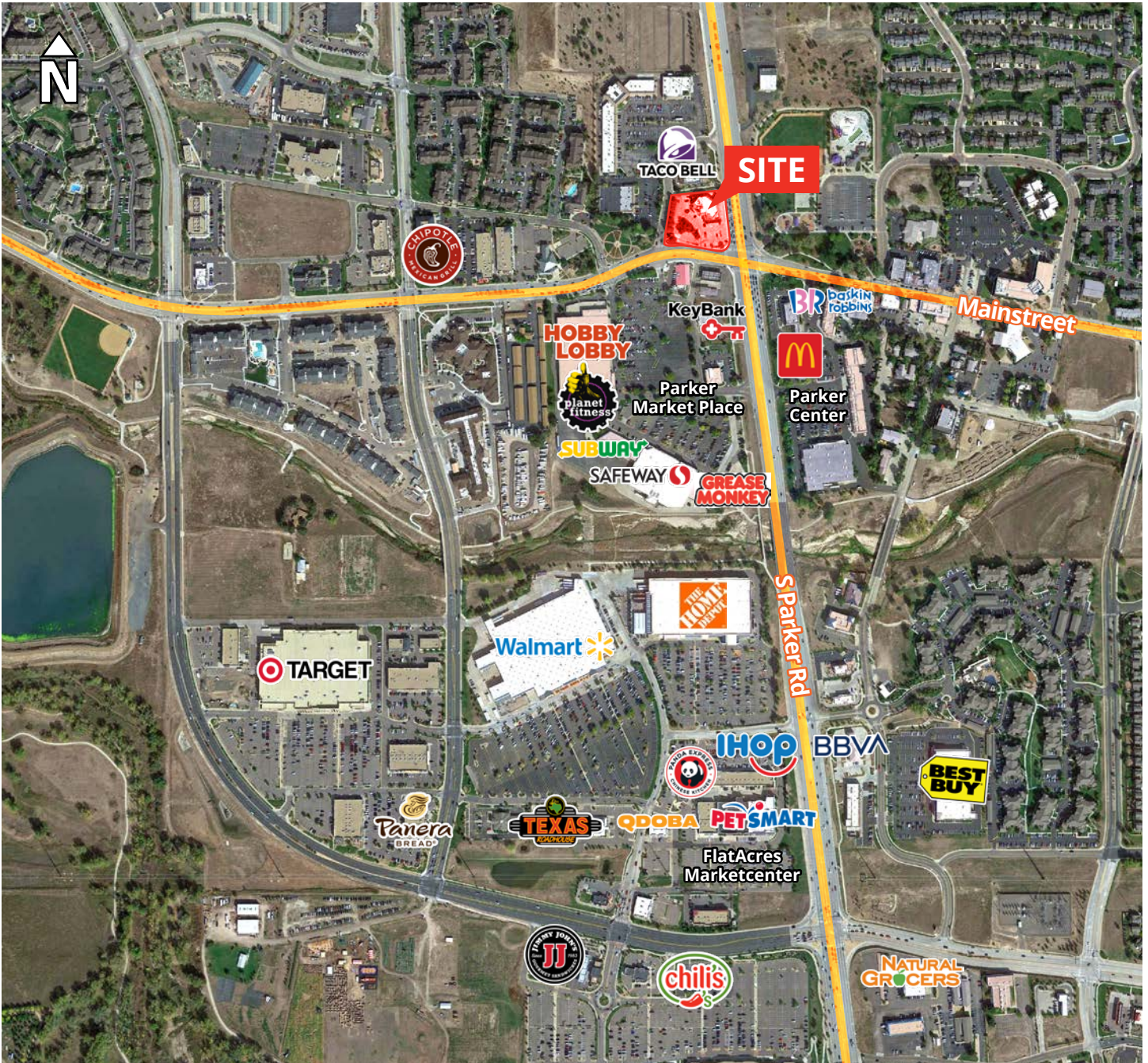
Location Highlights

- Great access off of Parker Road
- Close proximity to E-470
- Walking distance to shopping and restaurants

**For more
information**

Howard Schmidt
Vice President
+1 720 508 8104
howard.schmidt@avisonyoung.com

Justin Rayburn
Principal
+1 303 249 3730
jrayburn@fountainheadcommercial.com



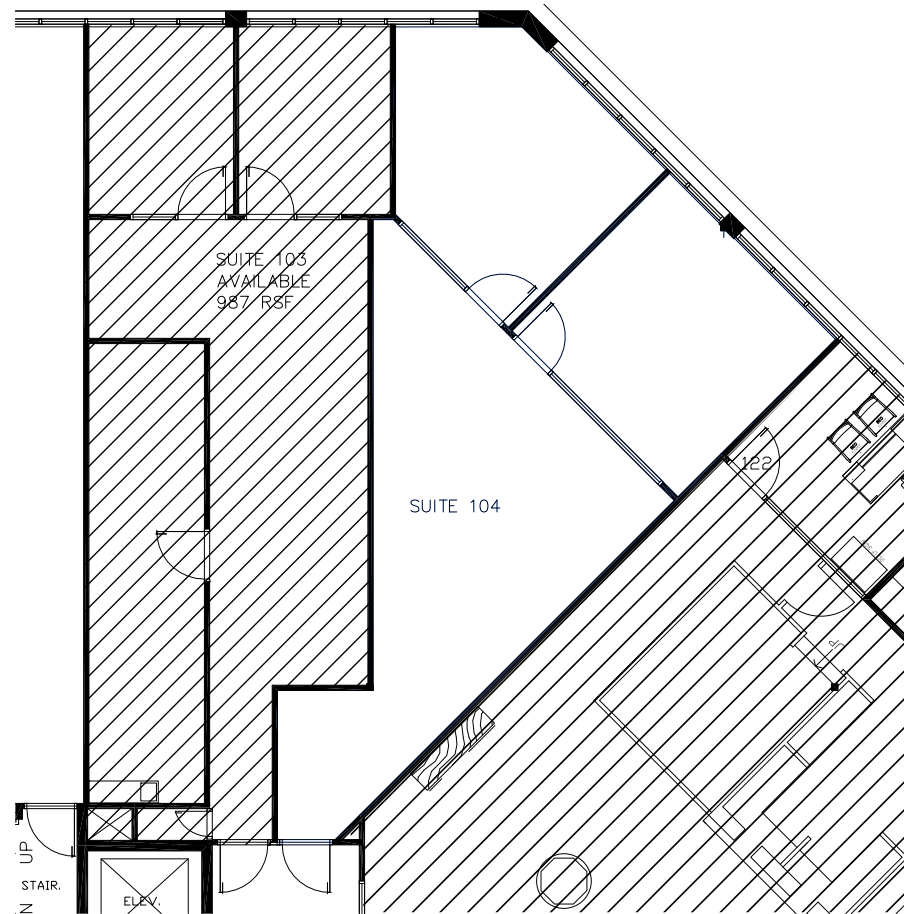
**For more
information**

Howard Schmidt
Vice President
+1 720 508 8104
howard.schmidt@avisonyoung.com

Justin Rayburn
Principal
+1 303 249 3730
jrayburn@fountainheadcommercial.com

Suite 104 – 1,131 sf

Office Space for Lease
19201 East Mainstreet, Parker CO 80134



**For more
information**

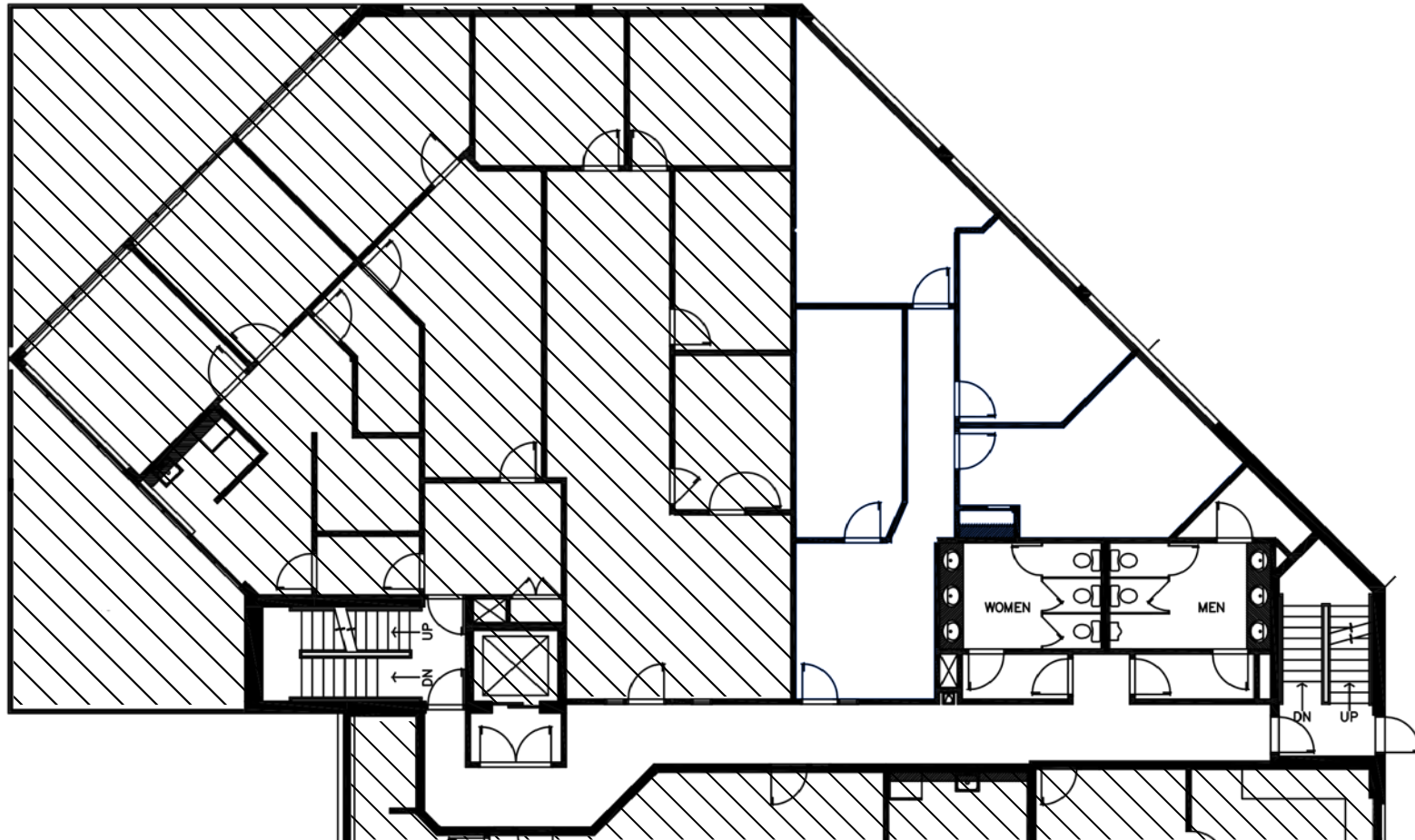
Howard Schmidt
Vice President
+1 720 508 8104
howard.schmidt@avisonyoung.com

Justin Rayburn
Principal
+1 303 249 3730
jrayburn@fountainheadcommercial.com



Suite 203 – 1,341 sf

Office Space for Lease
19201 East Mainstreet, Parker CO 80134



**For more
information**

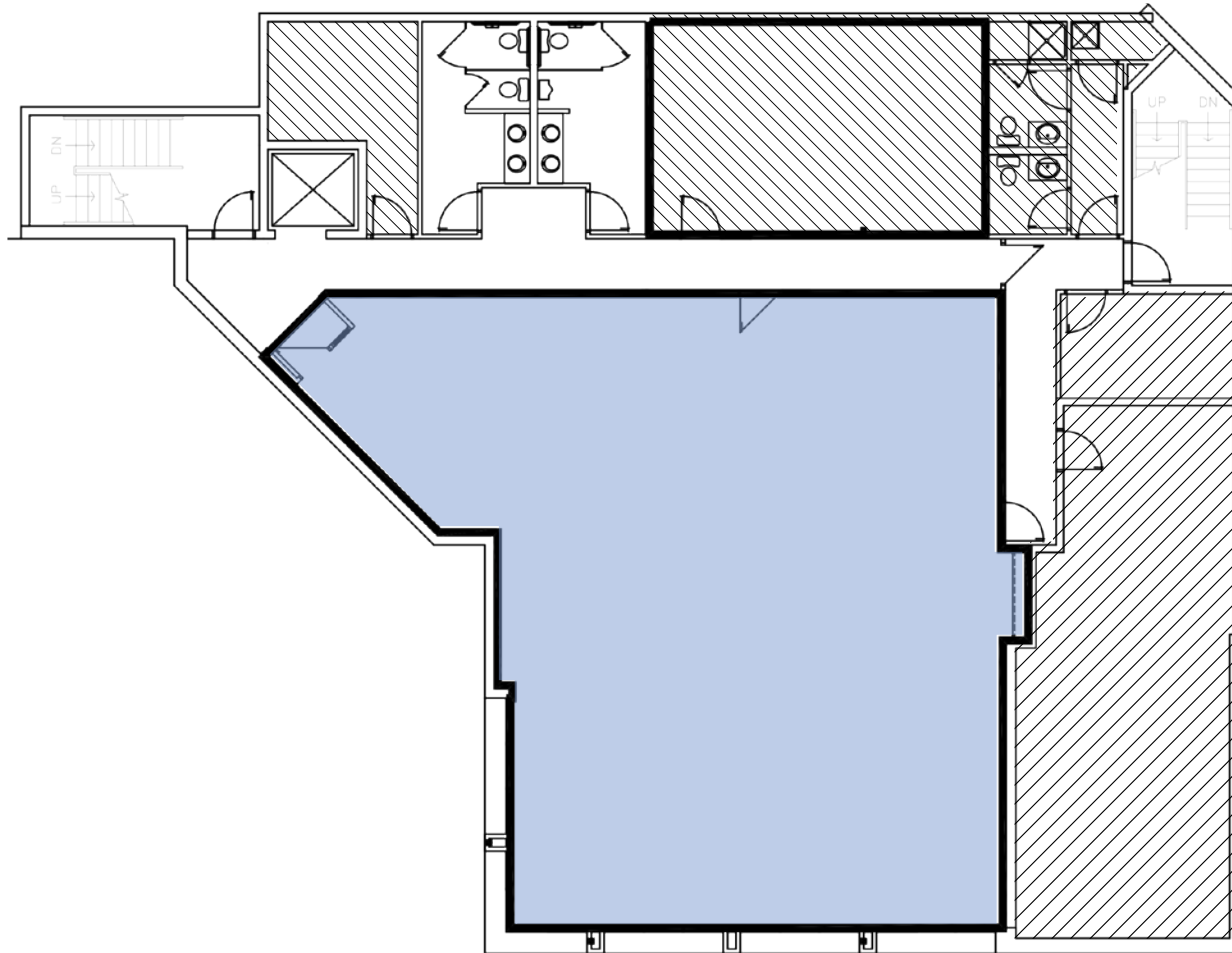
Howard Schmidt
Vice President
+1 720 508 8104
howard.schmidt@avisonyoung.com

Justin Rayburn
Principal
+1 303 249 3730
jrayburn@fountainheadcommercial.com



Suite GL1 – 2,628 sf

Office Space for Lease
19201 East Mainstreet, Parker CO 80134



**For more
information**

Howard Schmidt
Vice President
+1 720 508 8104
howard.schmidt@avisonyoung.com

Justin Rayburn
Principal
+1 303 249 3730
jrayburn@fountainheadcommercial.com



**AVISON
YOUNG**